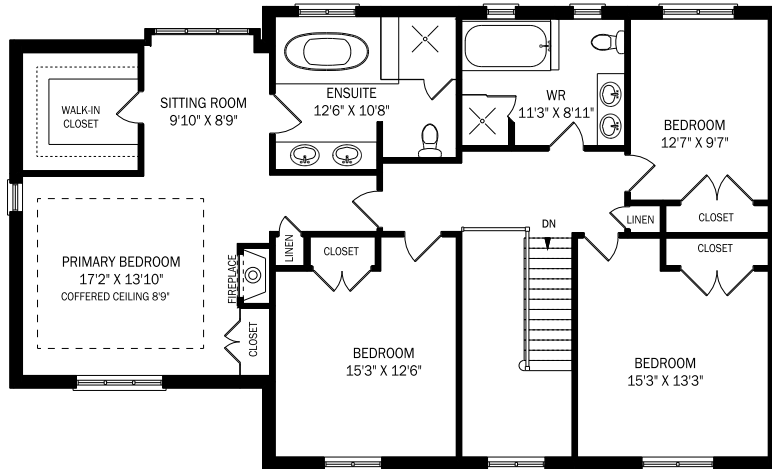


528 MICHAEL TERRACE, OAKVILLE

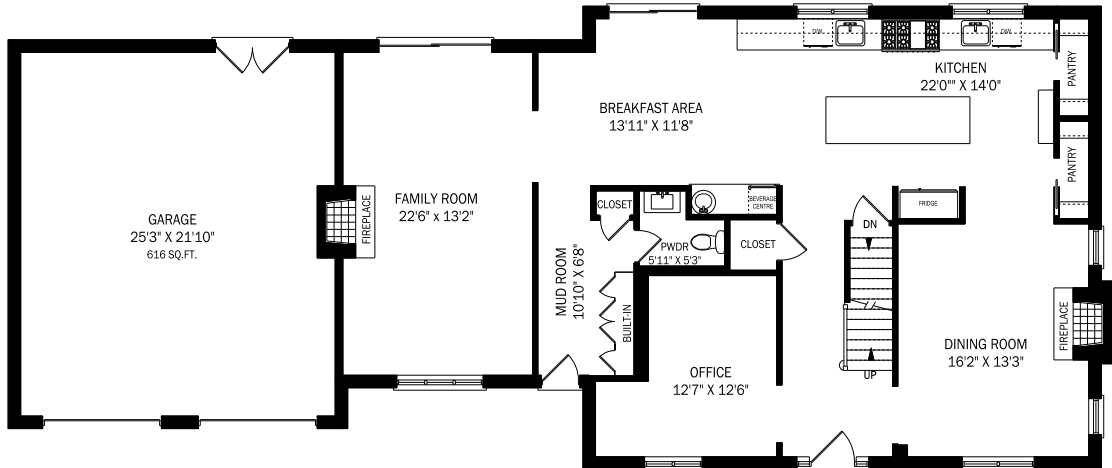


NIBLOCK | AVIS
REAL ESTATE



SECOND FLOOR - 1588 SQUARE FEET

AREA INCLUDES 88 SQ.FT.
OPEN TO BELOW SPACE



MAIN FLOOR - 1582 SQUARE FEET



LOWER LEVEL - 1582 SQUARE FEET

